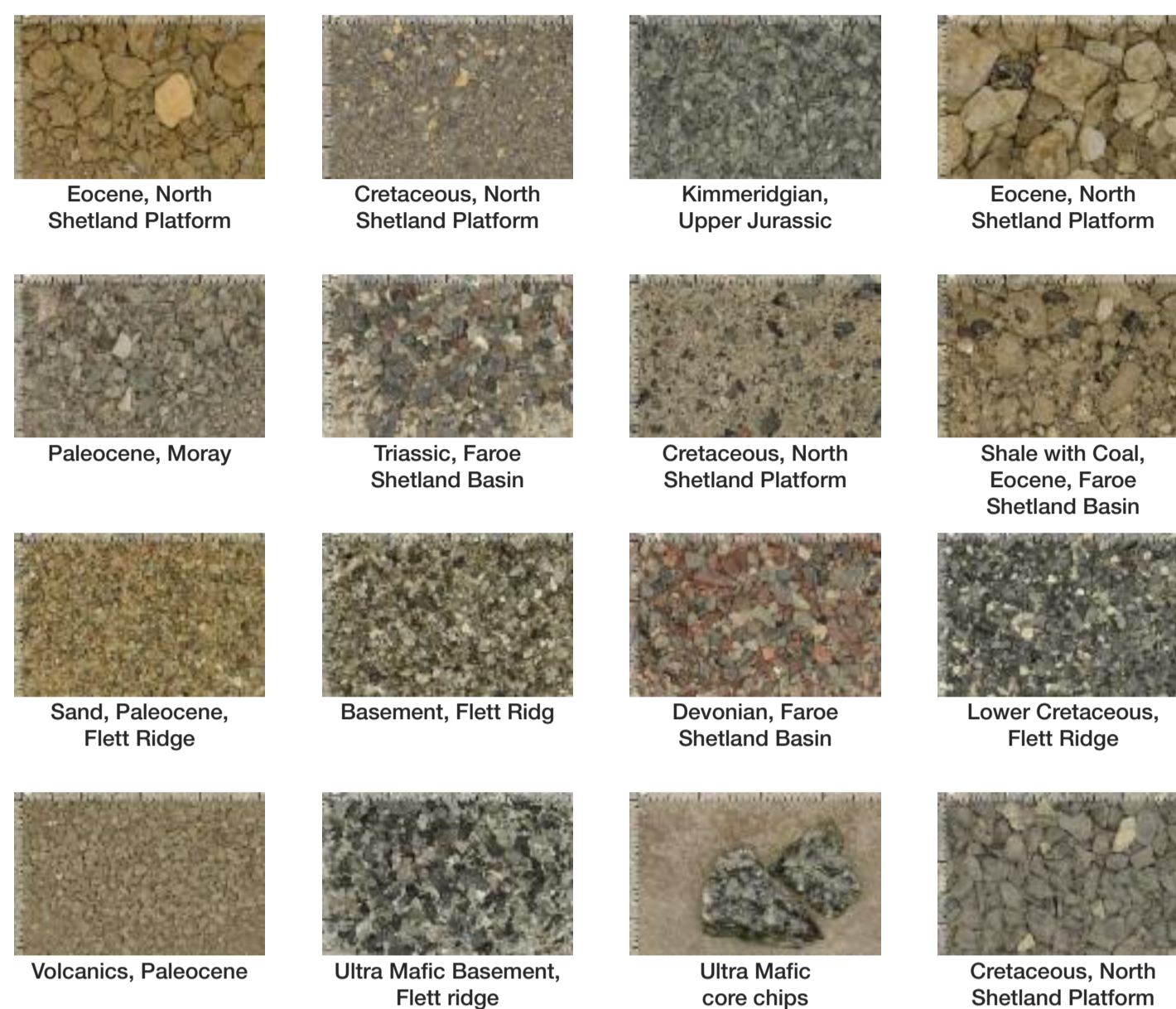


RockWash™

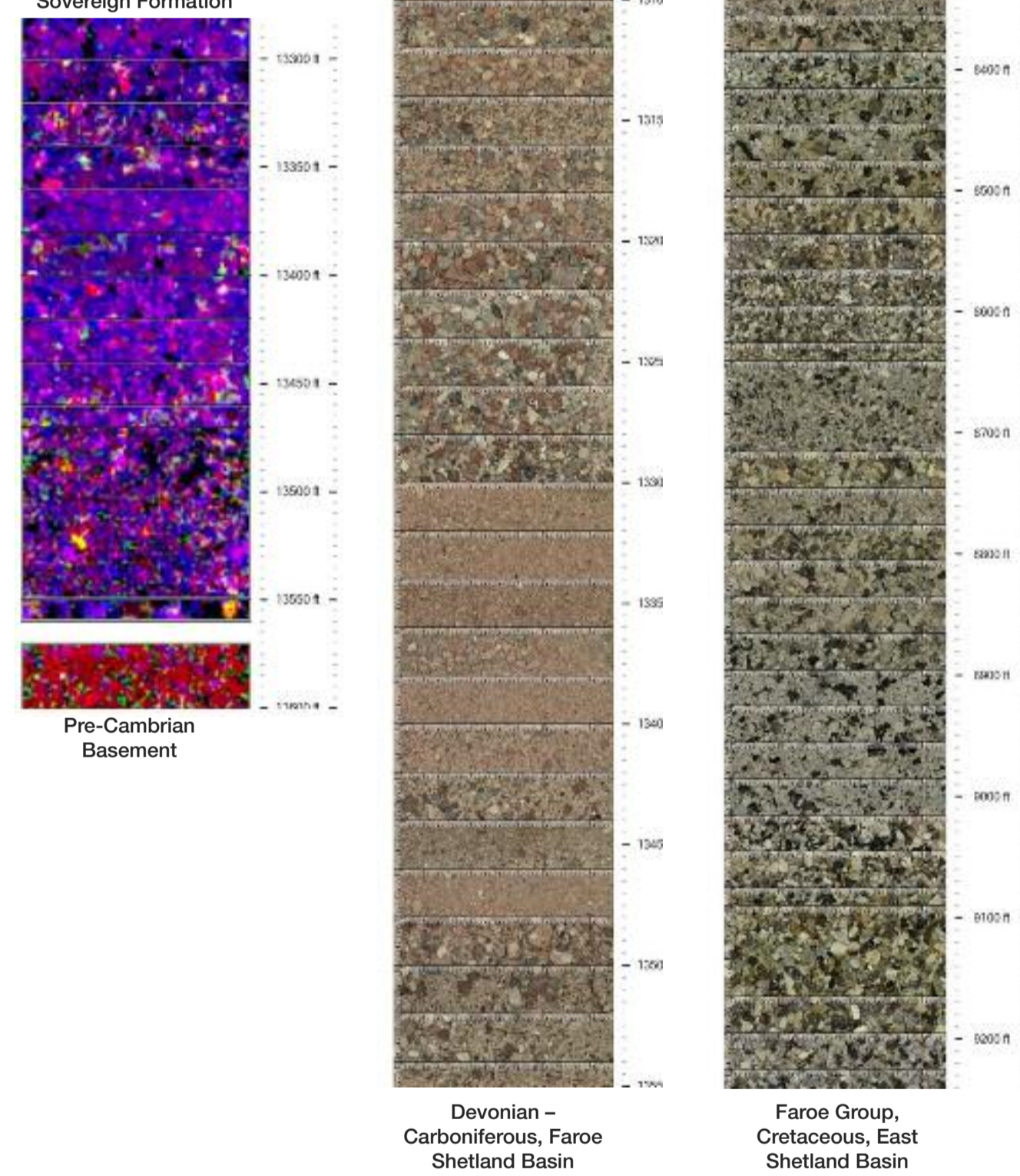
West of Shetland Islands PhotoSTRAT™ data set of 30 wells



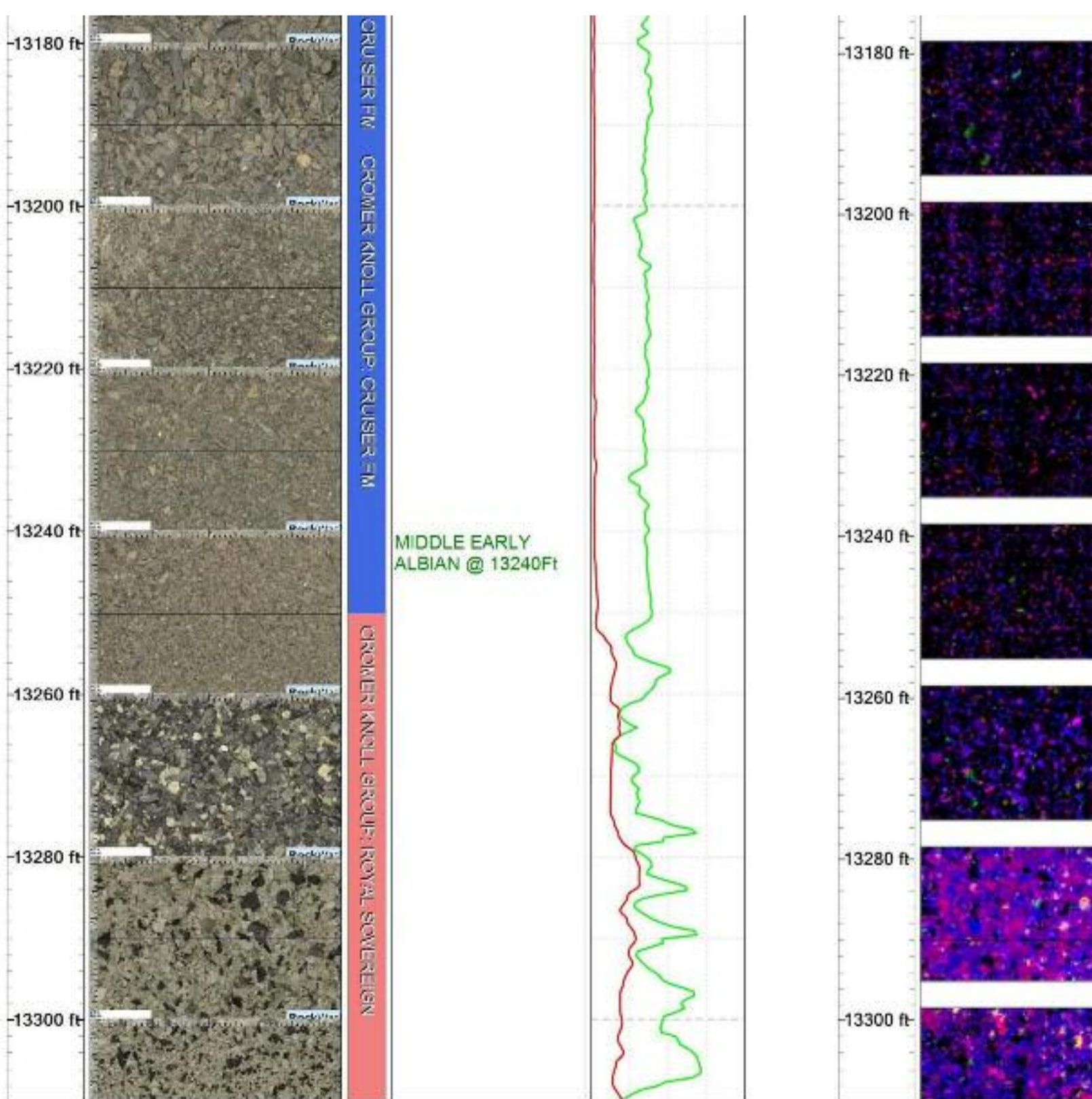
Extract from West of Shetland Islands Reference Database

Period	Group	Formation	Top Depth (ft)	Thickness (ft)	Top Depth (ft)	Thickness (ft)	Top Depth (ft)	Thickness (ft)
Early Paleocene (GP)	Shetland Group	Basal Sandstones	1324	812	1324	812	1324	812
		Sutton Fm (Sutton) (T10)	1324	812	1324	812	1324	812
Late	North Rona and Møre Basins	Undivided						
		Joralfare Fm						
		Kyre Fm						
		Undivided						
		Joralfare Fm						
	West Shetland Basin, Solan, Faroe Shetland Basin, Westray and Rona Ridge	Undivided						
		Joralfare Fm						
		Kyre Fm						
		Undivided						
		Joralfare Fm						
Cretaceous	Chalk Group	Herring Fm						
		Hidro Fm						
		Ys North Fm						
		Solan, Faroe Shetland and Møre Basins, Westray and Rona Ridges						
		Combedale Fm						
	Early (Cromer Knoll GP)	North Rona & Solan Basins	Redby Fm	5713	820			
		Carrick Fm						
		Vahall Fm						
		Cromer Knoll Limestone						
		Widely Fm						
West Shetland Basin Westray and Rona Ridges	Redby Fm							
	Carrick Fm							
	Cruiser Fm							
	Royal Sovereign Fm							
	Hepburn Fm							
Møre Basin Eland Platform	Cromer Knoll Limestone							
	Vahall Fm							
Late	Humber Group	Kimmeridge Clay Fm	5785	657				
		Ridge Conglomerate Unit						
		Rona Fm	1833	692				

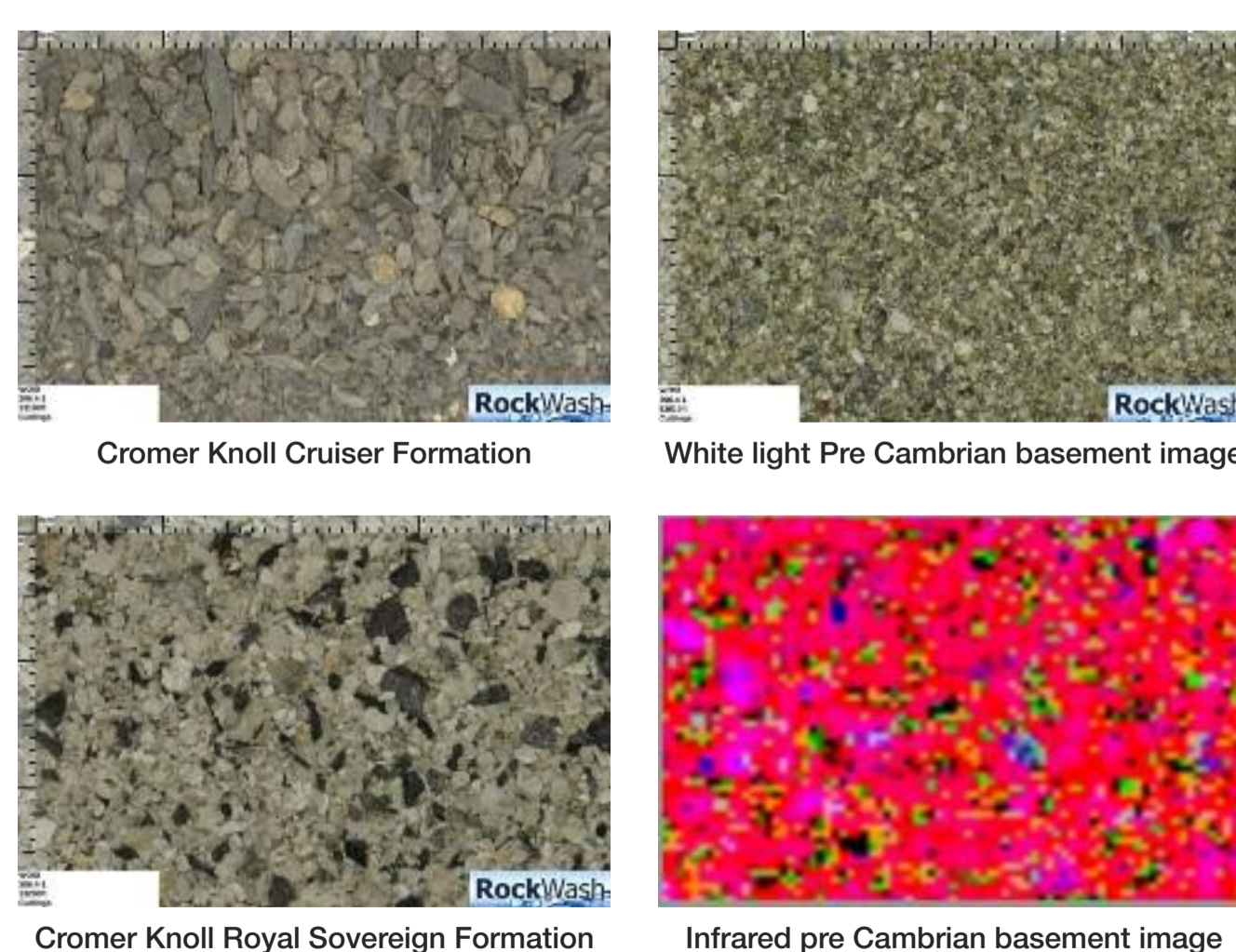
Cromer Knoll Royal Sovereign Formation



206/4-1 Transition from Cromer Knoll Group Cruiser Formation to Royal Sovereign Formation White light and Infrared images with Gamma and Resistivity Data



206/4-1 example images



Further Information & Contacts

HEAD OFFICE: +44 (0)2920 807604

Douglas Langton: +44 (0)7816967230
douglas.langton@rockwash.co.uk

Mike Snape: +44 (0)7947046699
mike.snape@rockwash.co.uk

